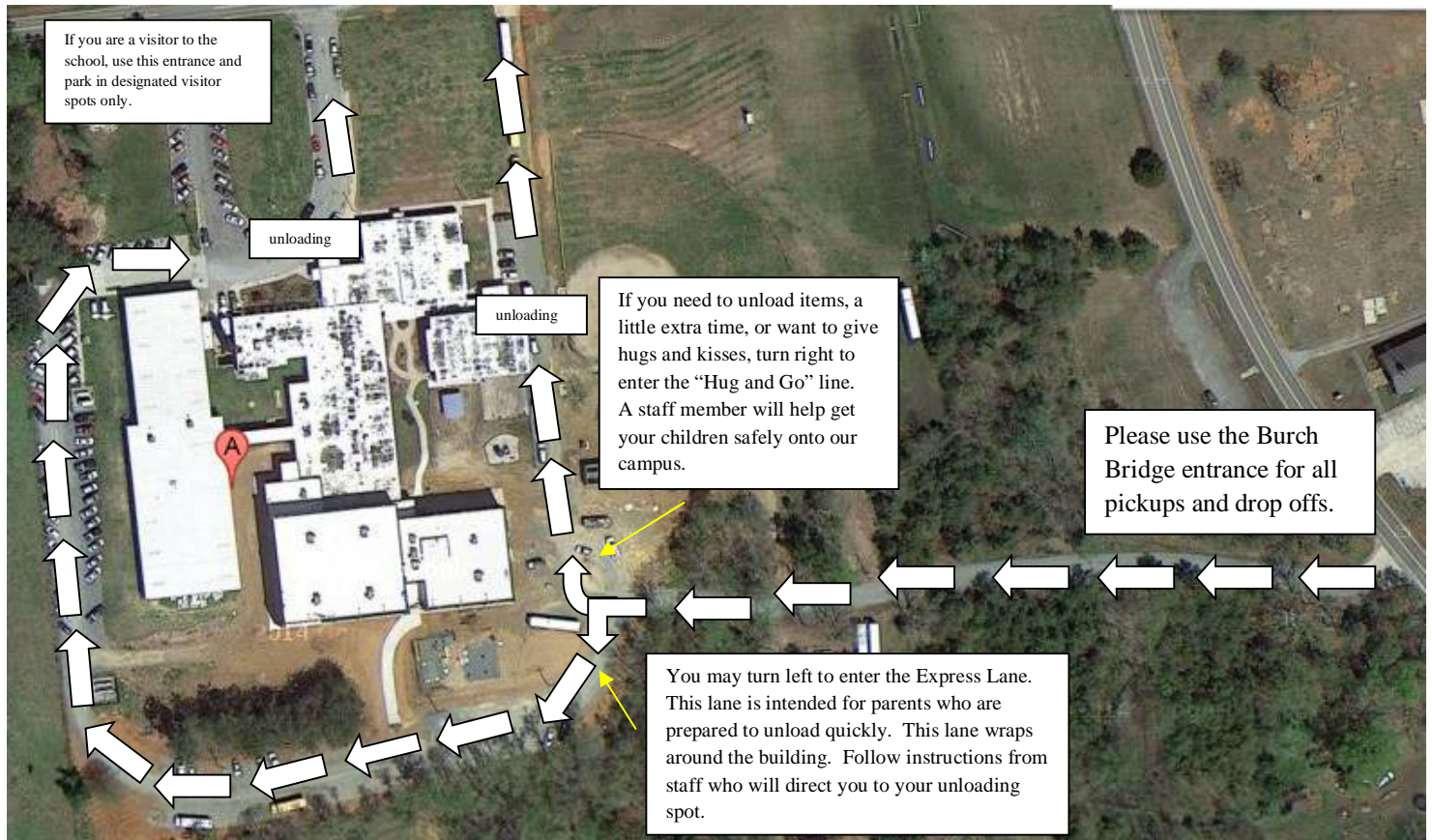


# Clover Garden Drop Off Traffic Flow

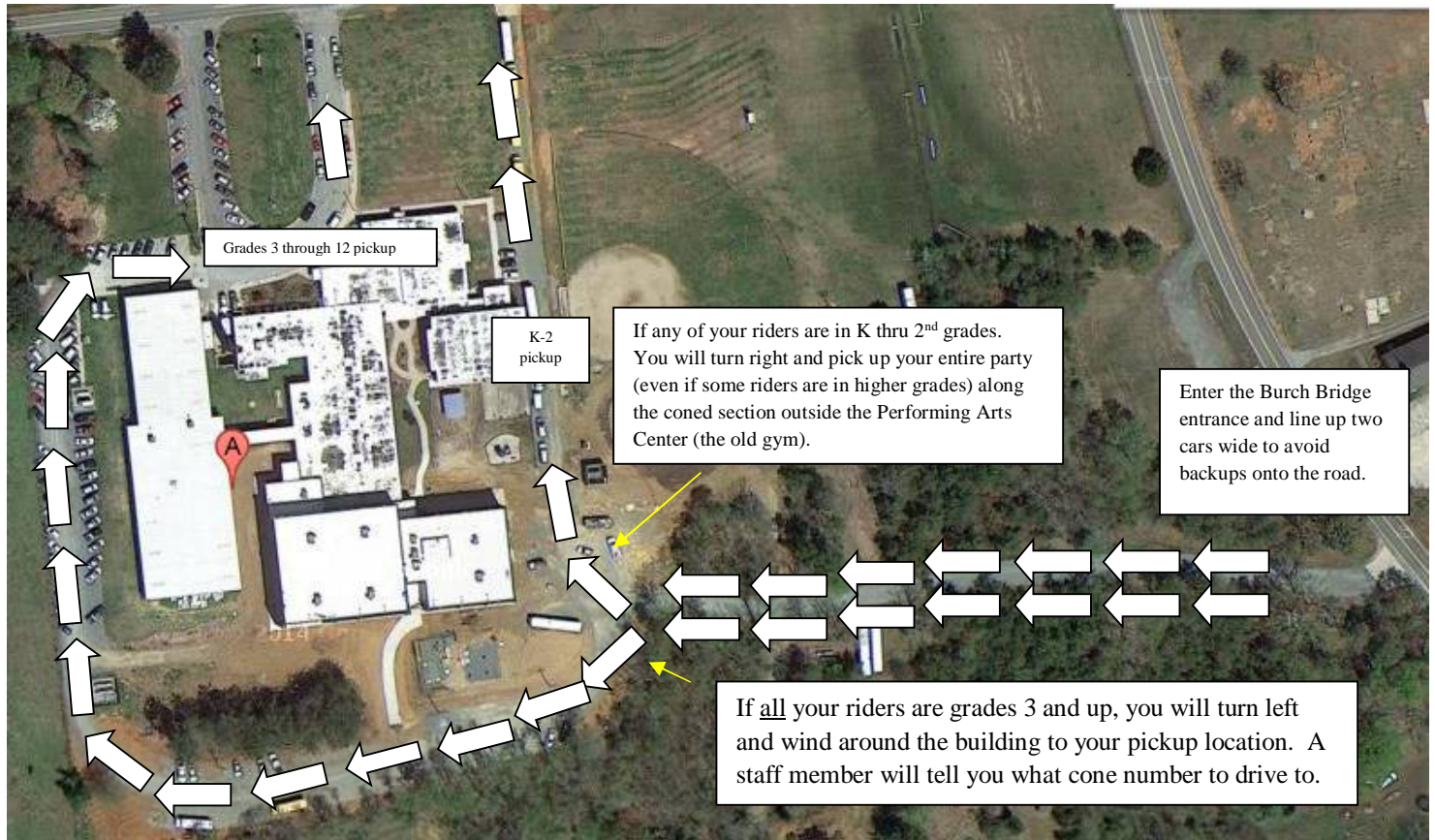


Campus speed limit is 5 mph. While on campus, please be aware and expect the unexpected. Staff members will be present to help ensure student safety and proper traffic flow. When approaching your drop off location, please drive to the farthest forward position. By doing this, line wait times are significantly reduced. Staff members will help direct you.

If you wish to park on campus, there are 10 visitor spots located near the Altamahaw Union Ridge Road entrance. You may park in any spot labeled with a "Visitor Parking" sign. All non-visitor spots are assigned to students and staff members. If you park in a non-visitor spot, your vehicle may be removed with the driver responsible for all removal costs. For student safety and campus security reasons, you may not park in unmarked or undesignated areas, park along the road, or make your own parking spot.

The Altamahaw Union Ridge Road entrance is to be used only by the Clover Garden First in Line Pass Holder, designated staff members, and visitors parking for extended time. All others will be asked to turn around and enter at the main entrance on Burch Bridge road. A staff member will be present to help direct traffic and get you and your children safely across the driveway.

# Clover Garden Afternoon Pickup Traffic Flow



\* Please place your name card on your dash to help our staff members locate your riders.

In order to help get our children safely and efficiently through the pickup line, we will be loading students from two different locations. If you are picking up anyone from campus that is in Kindergarten through 2<sup>nd</sup> grade, you will be directed to turn right toward the softball fields. You will be picking up all students in Kindergarten through 2<sup>nd</sup> grade and any family members riding with them outside the Performing Arts Center (the old gym) near the softball field. All students in higher grades that are riding home with someone in K-2 will come to the K-2 pickup area. Staff members will be present to help guide and direct you.

If all of your riders are in 3<sup>rd</sup> grade through 12<sup>th</sup> grade, you will be directed to turn left and travel through the parking lot area. You will travel around the building to your pickup location. Staff members will be present to help guide and direct you.

Angel Garden parents picking up during dismissal must arrive by 2:55pm. Enter through the Altamahaw Union Ridge Road entrance and park in the designated parking spots at the front of the building. These spots are marked with signs.